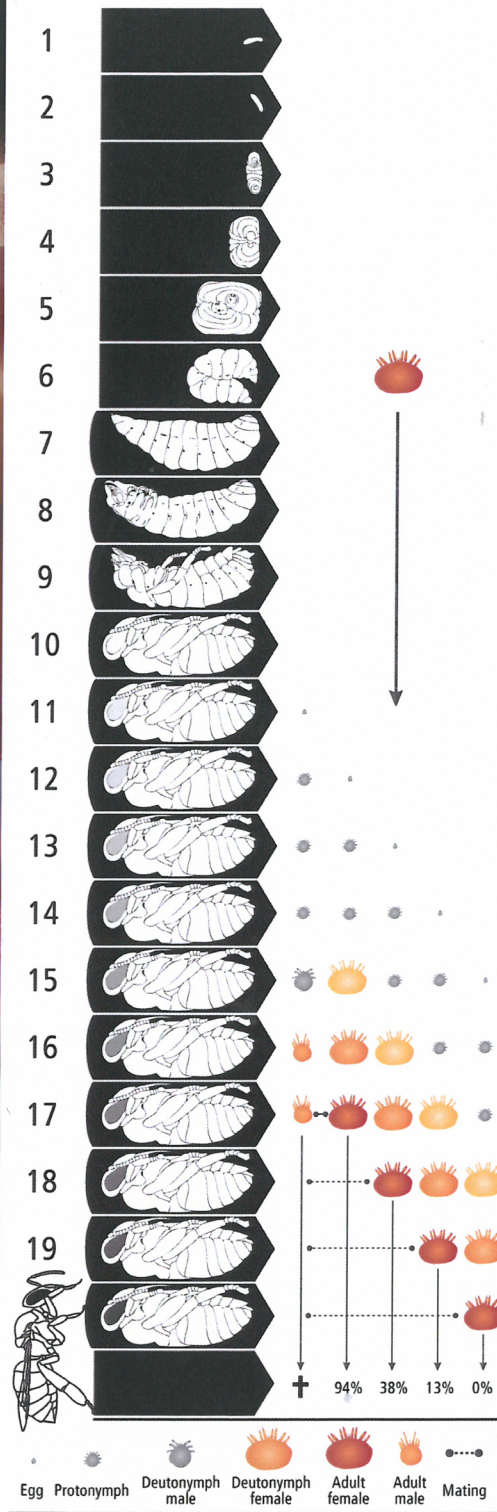


**Fig. 10:** The varroa mite. The most serious pest of honeybees worldwide is the ectoparasitic mite *Varroa destructor*. (A) Lateral view of an adult female mite resting on the head of a pupae. (B) Dorsal view of an adult female mite. (C) An immature female mite. (D) An immature male. (E) An adult female on a pupae. Photographs used with permission © Gilles San Martin.



**Fig. 11:** (Previous page) Development of the varroa mite. The life cycle of the varroa mite is in synchrony with the development of the honey bee. Most mite cycles only produce a single viable adult female. The probability of a fertile female emerging successfully is shown as percentage values. The male mites do not exit the developmental cell. Numbers on the left denote developmental stage of the bee in days.