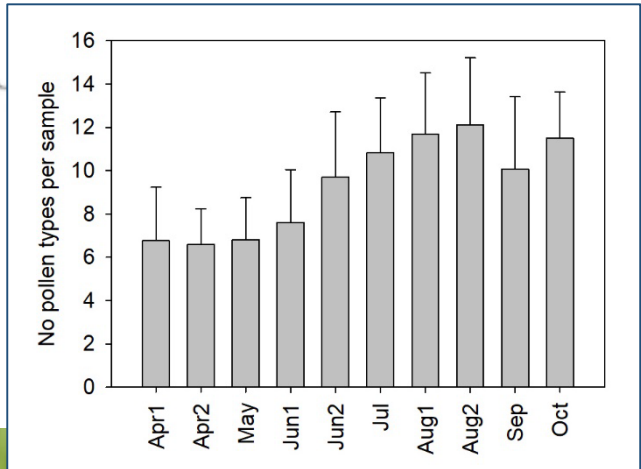
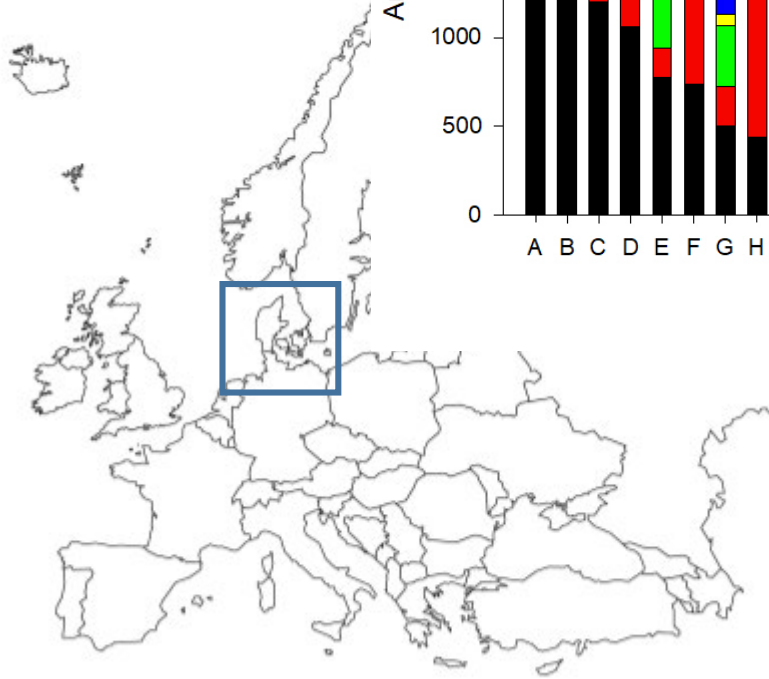
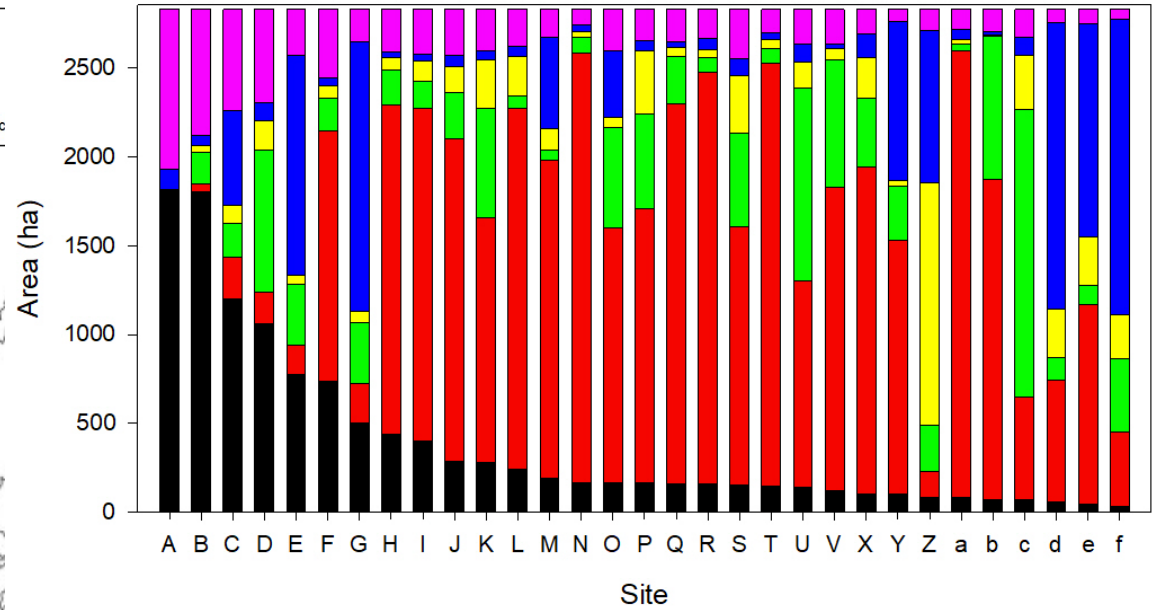
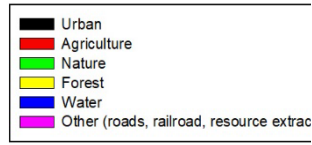


Pollen collection by honeybees in Danish landscapes (2020-2022)

Yoko L. Dupont, Mette B. Greve, Per Kryger
 Aarhus University, Denmark
 e-mail: yoko.dupont@bios.au.dk

- 30 experimental apiaries
- Bee bread collected by citizen scientists once every 3 weeks
- April to September/October 2020-2021
- Analysis of landscape composition in 3 km circle surrounding each apiary



Project funded by the Danish Agricultural Agency



Photos: Yoko L. Dupont