

Seed production of native species



v/Ivana Christensen

Who are we?

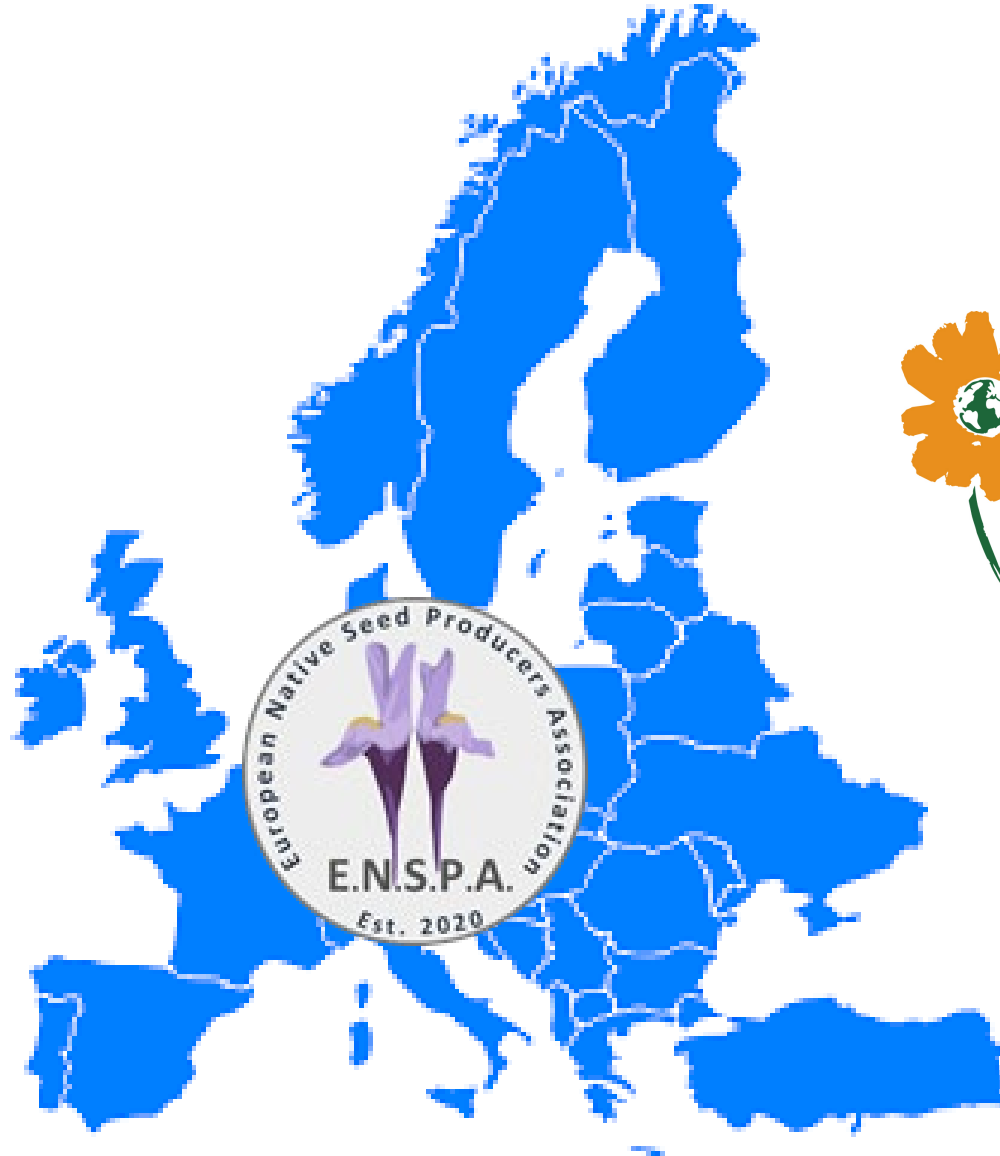


...what is a native specie?

is indigenous to a given region or ecosystem if its presence in that region is the result of only local natural evolution (though often popularised as "with no human intervention") during history.

<Wikipedia>

E.N.S.P.A.



MILLENNIUM
SEED BANK
PARTNERSHIP
Kew
ROYAL BOTANIC GARDENS



Where do we get seeds from & our challenges

Code of Conduct



... find a ancient (more then 100 years old) meadow...

(EU direktiv only 40 years old)



<somewhere in UK>



NYKILDE®

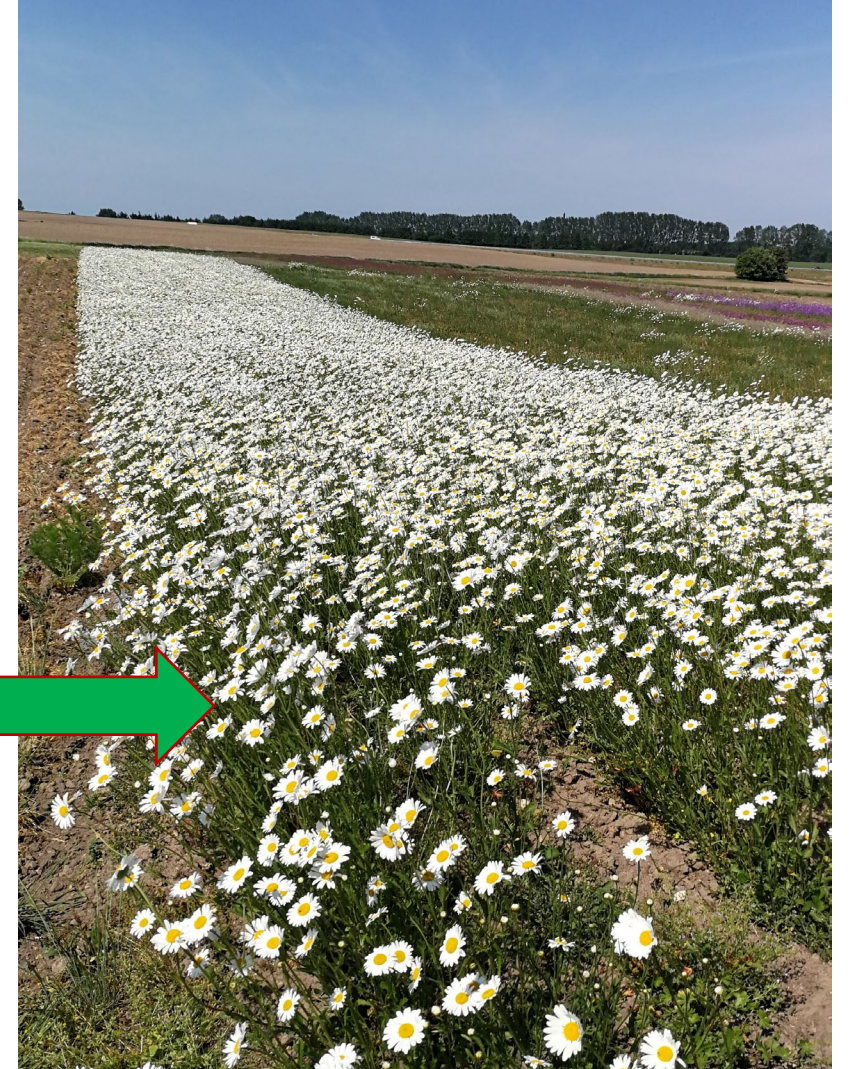
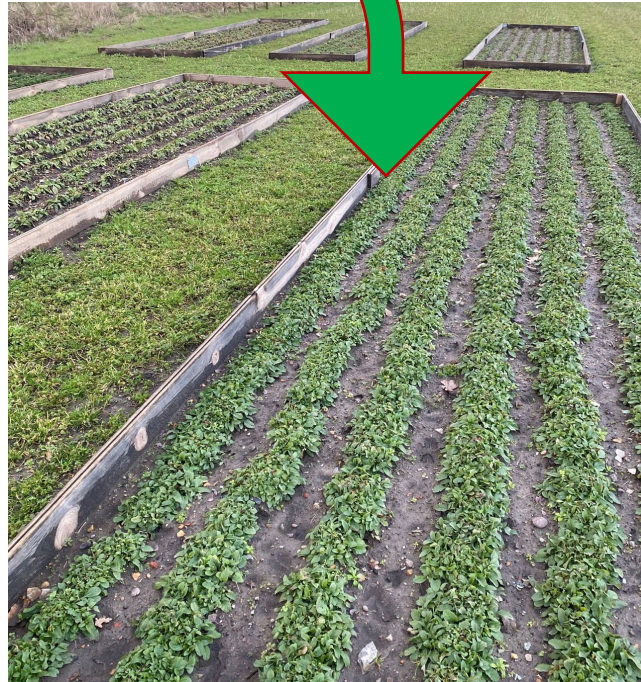
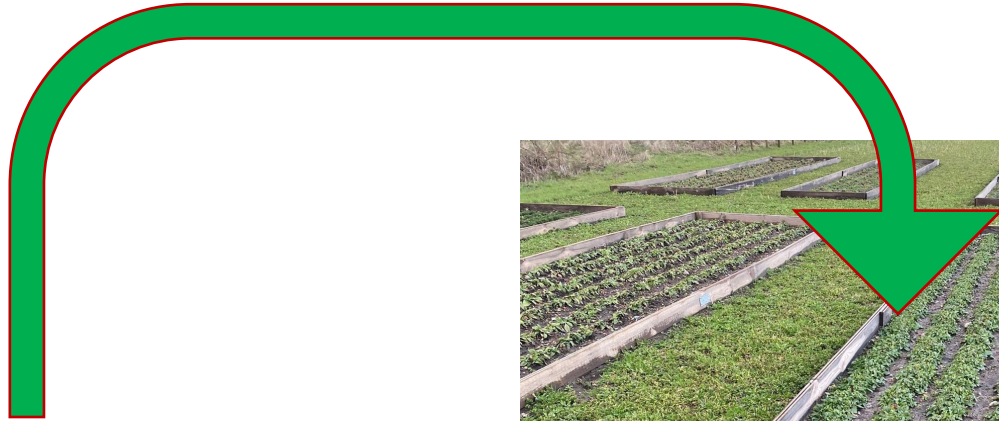
Seed collection:



Annuals < 2 % of matured seeds in population
pr.sampel by collection in situ
Perennials < 25 % of matured seeds of population
pr.sampel by collection in situ
Optimum: 50 random placed individuals

Propagation

Max 5 generations, to avoid a loss of genetic variation!



How we do?



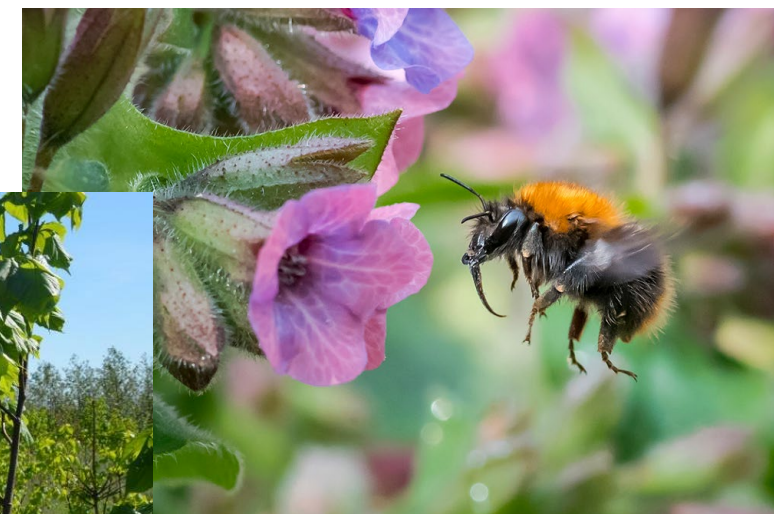
Who does the job?



Harvesting & Cleaning



Seed mixtures



Thank you for your attention!

