

# Ridomil Gold<sup>®</sup> Metalaxyl-M (Mefenoxam) in potatoes against Late Blight

## A critical review of its role in modern potato production systems

Myriam Van Hecke - Technical Lead Disease Control Europe, **Syngenta Crop Protection**  
Euroblight Ourense, May 2026



**syngenta.**

# Content

- Introduction
- Mode of Action
- Resistance management
- Efficacy against PHYTIN
- ICM positioning



syngenta.

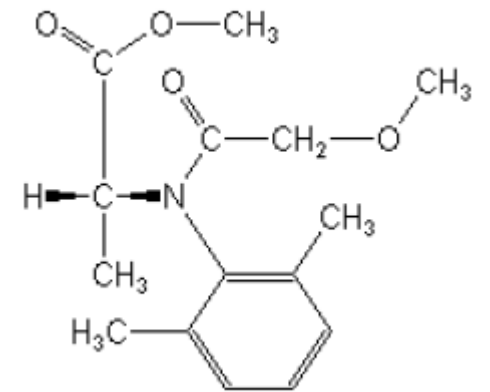
# RIDOMIL GOLD® : Reasons to believe

- Mefenoxam, metalaxyl-M is an enantiomer of metalaxyl = active ingredient renewed in A1
- Growers need flexibility to mix the current available MoA's to ensure a crop program to manage resistance and deliver good efficacy thanks to a unique systemic active ingredient (AI), with the highest intrinsic activity within the phenylamide's family.
- The ready mixes registered in past are banned or restricted due to the partner of MFX (mancozeb, chlorothalonil, copper), that's why we need to leave the freedom for the grower to choose the correct partner depending on any specific and actual situation.
- This chemical class is needed to have enough AI rotation in the spray programs

# The new era of Mefenoxam™

- **Product:** metalaxyl-M solo on different crops using 93g AI/ha.
- Mandatory to be used in tank mix with a different MoA as recommended by FRAC (claim on the label)
- **Broad label:** potato, lettuce, onion, tomato, cucurbits, brassicae, grape, citrus
- **Diseases:** downy mildews, *Oomycetes* ( *PHYTIN*, *PLASVI* )
- **Application type:** Foliar Spray
  
- **MEFENOXAM :**

- Trade name for metalaxyl-M (MFX), a **phenylamide** fungicide highly active against the ***Oomycetes***.
- It inhibits ribosomal RNA synthesis in the pathogen at various stages in its life cycle
- Systemic compound rapidly taken up by the plant and translocated acropetally.



# Mode of action of Mefenoxam

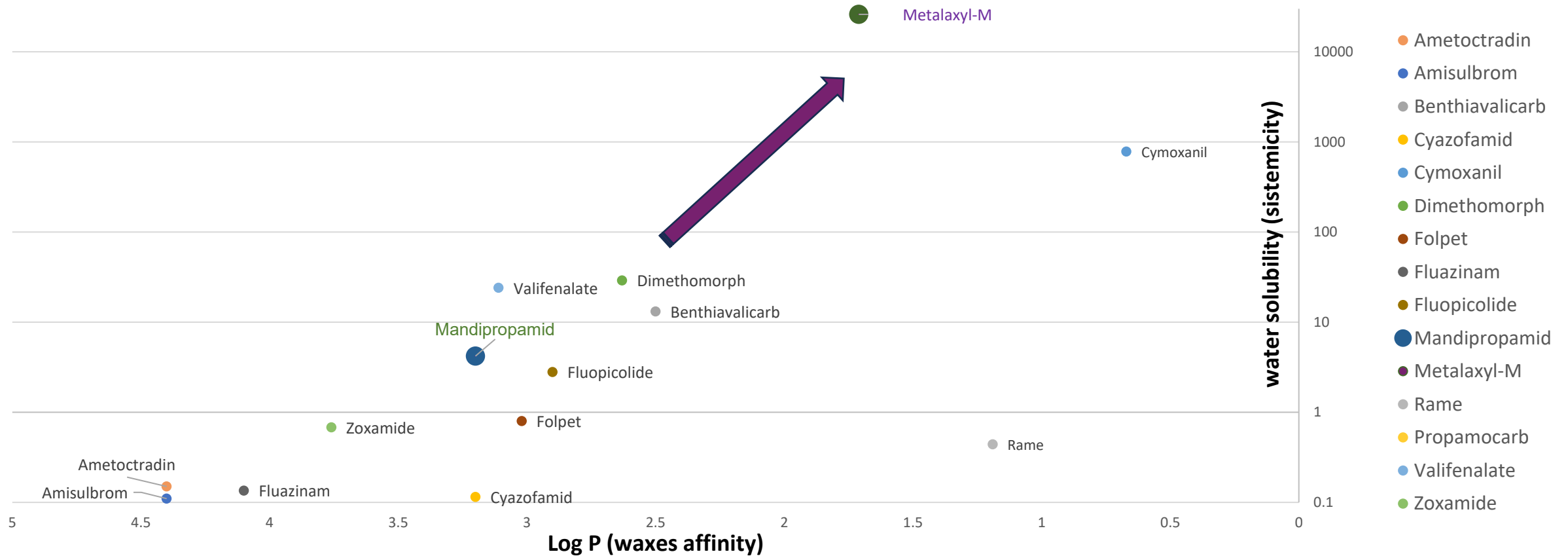
Biosupport and biokinetics studies  
(uptake-mobility, curativity)



# Metalaxyl-M, the systemic Active Ingredient:

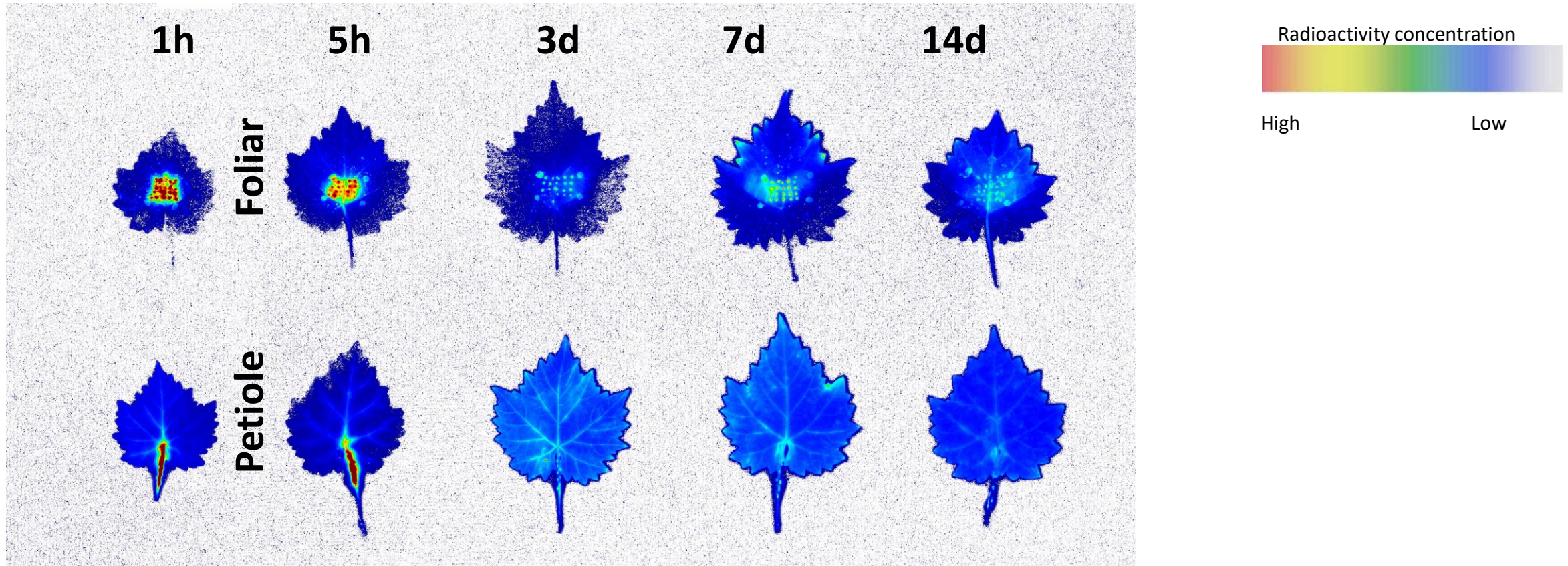
Protection of new growth through systemic movement

Log-P	1.71
Water solubility (ppm)	26000



# Metalaxyl-M, the systemic Active ingredient :

Rapid uptake and translocation within plant tissues



After foliar and petiole application, MFX can be seen to move rapidly throughout the entire leaf within 1h.

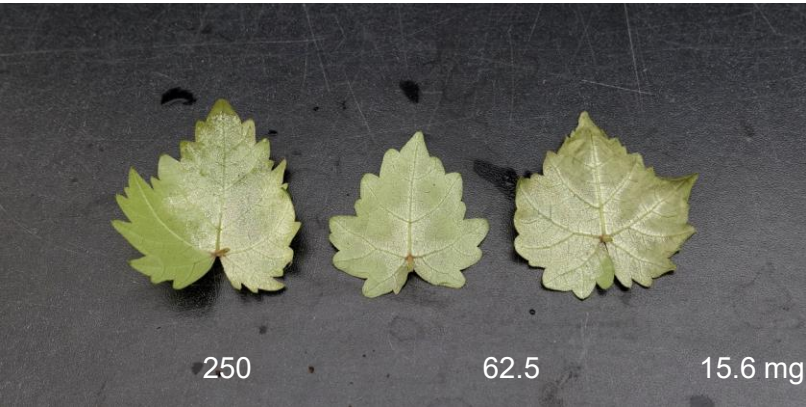
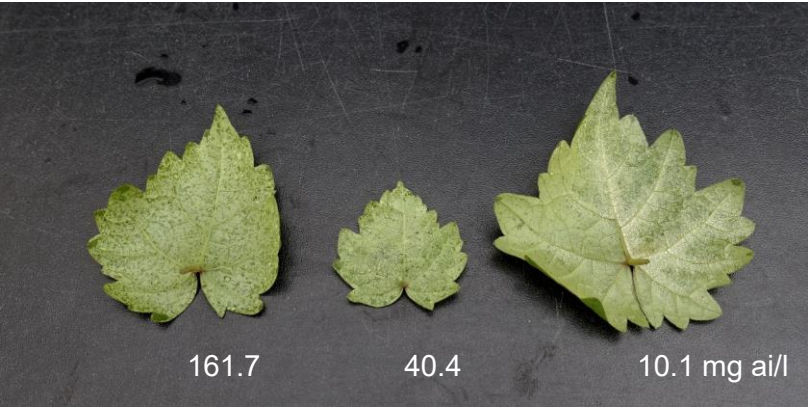


# Metalaxyl-M, the systemic Active Ingredient:

Preventive and early curative activity



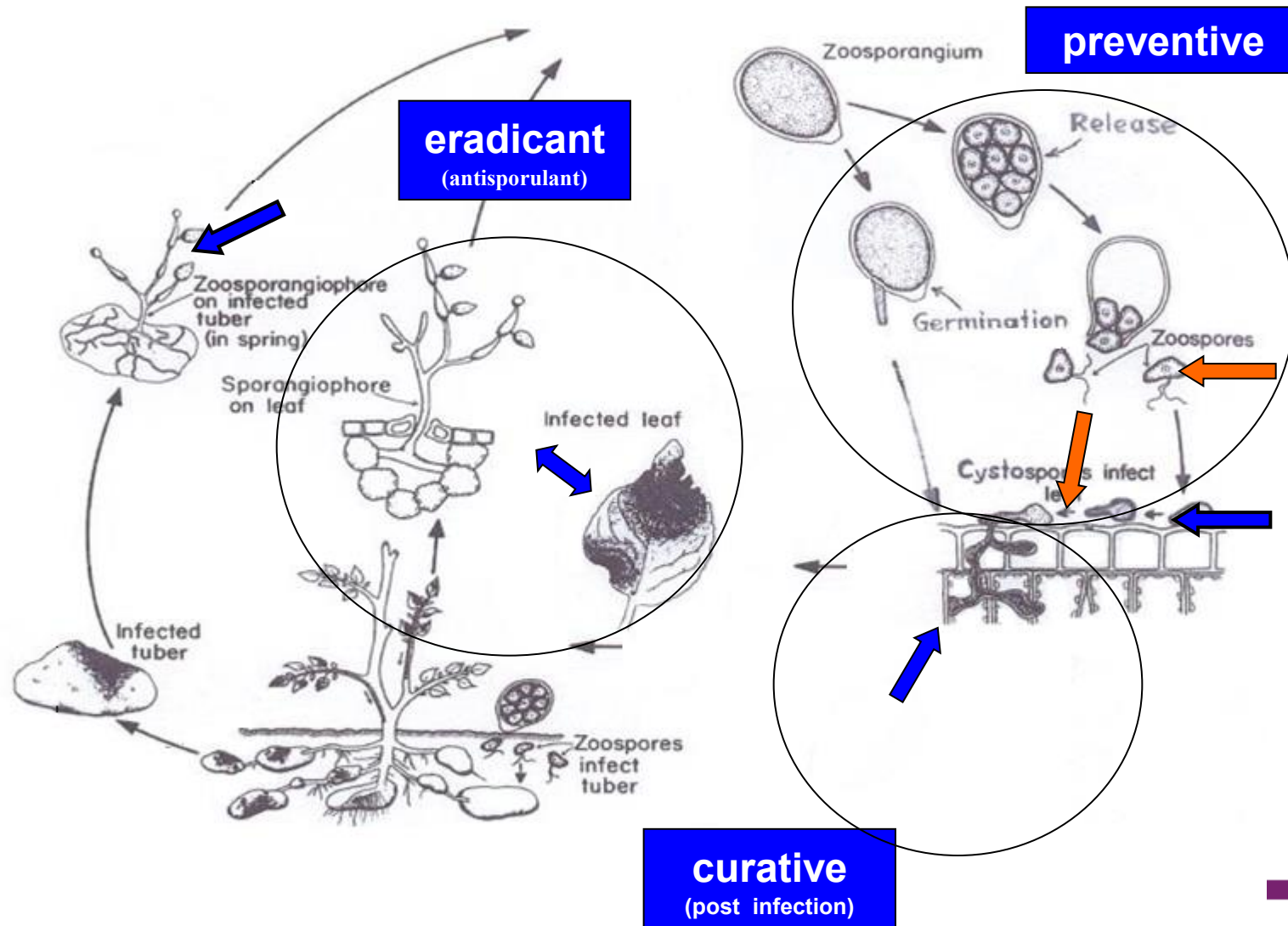
Curativity photographic impressions (1d curative, 6dai)



dai: days after inoculation

# Phenylamide and partner fungicides: Effect on stages during pathogen life cycle

Mixtures of fungicides with different modes of action increase level of disease control and delay evolution of resistance

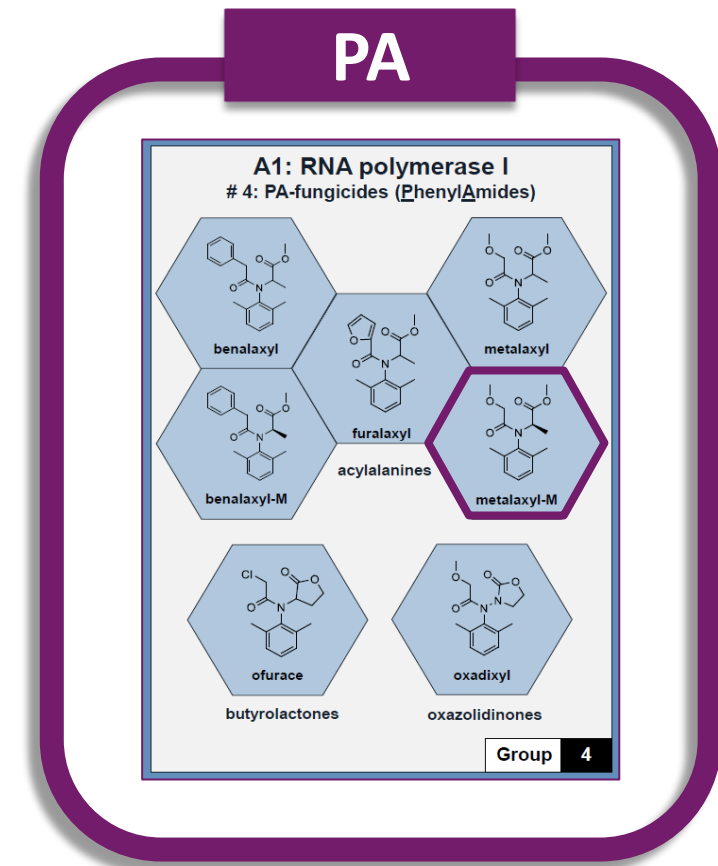


**Ridomil Gold**®

syngenta.

# Resistance Management

## Metalaxyl-M



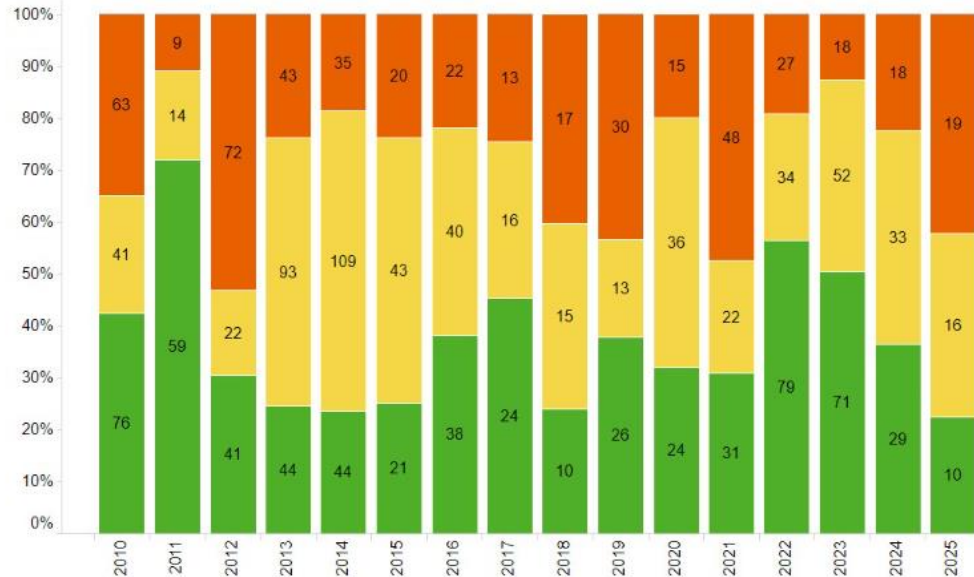
# Resistance situation in Europe for metalaxyl-M

Generally **stable**, moderate frequency of resistance was monitored in grapes and potato.

Following the **FRAC** recommendations **the resistance is not spreading in Europe in the last 10 + years**

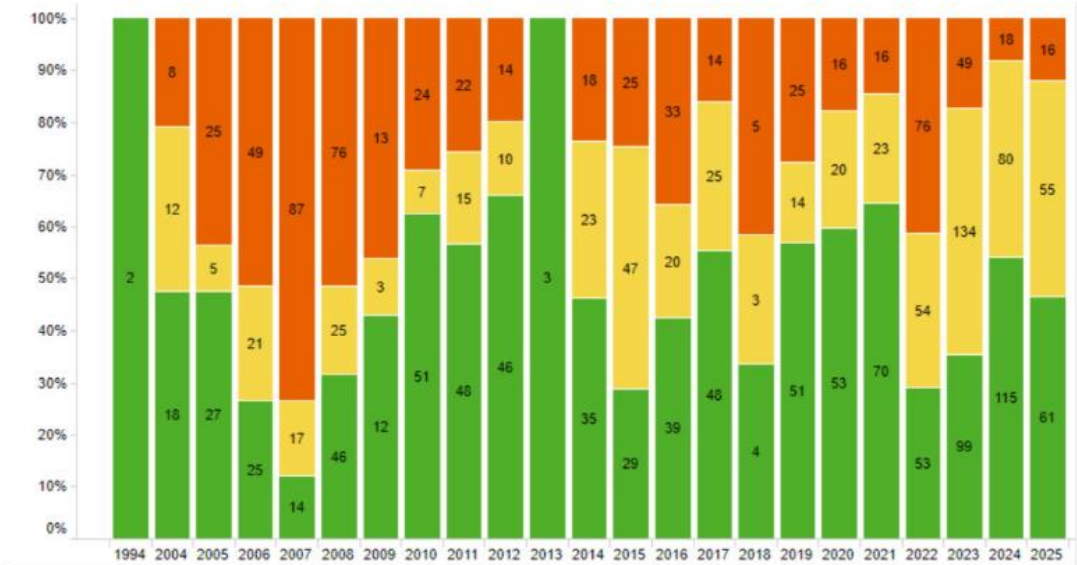
## Plasmopara viticola sensitivity monitoring to MFX from 2010

Epilic results, comparison 2010 to 2025, field Europe



## Evolution of P. infestans sensitivity to MFX since 2004

Sensitivity to MFX stabilized in the last 10 years at low to moderate frequency



- The frequency of resistant isolates (EC50 > 30 ppm) in 2025 is in line with the previous 13 years



## Resistance situation in Europe for metalaxyl-M

- The PA-fungicides inhibit RNA biosynthesis (polymerase complex I) in the target pathogens.
  - The mechanism of resistance may involve one (or two) major gene(s) and potentially several minor genes. The target gene and the site of mutation(s) in the genome have not been mapped so far. Therefore, there are no molecular methods available for the detection of resistance.
- Sensitivity of populations to PA fluctuates from year to year and within season:
  - Sensitive isolates seems to be predominately early in the season.
  - This is also one of the reasons why MFX applications are recommended early and preventively.

PA= PhenylAmides

# Efficacy Trial results

## RIDOMIL GOLD®



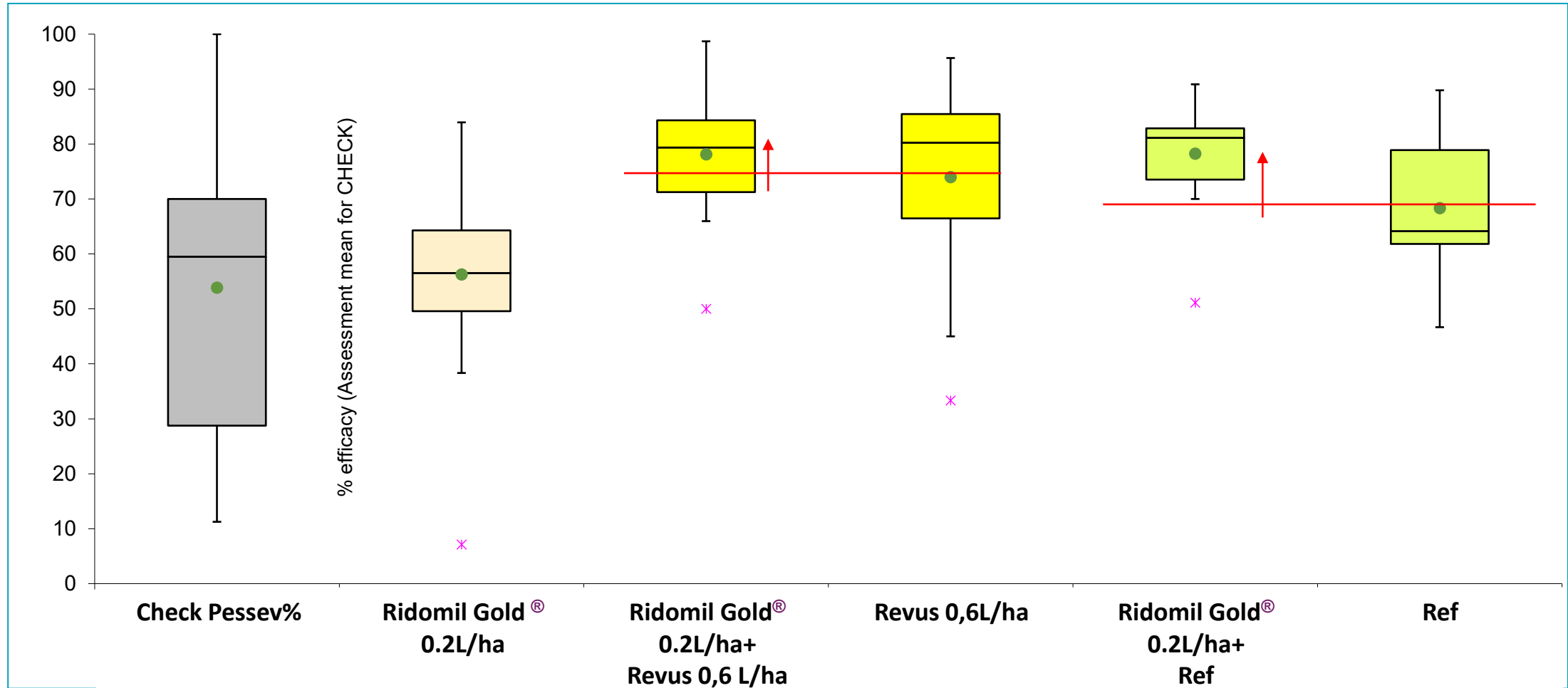
**Ridomil Gold**®

syngenta.

# Ridomil Gold<sup>®</sup> Efficacy in mixture with different partners on potato against *P. infestans* (2020-2022)



n=17 trials PESSEV% LEAF (7-33DALA)



# Positioning

# RIDOMIL GOLD®

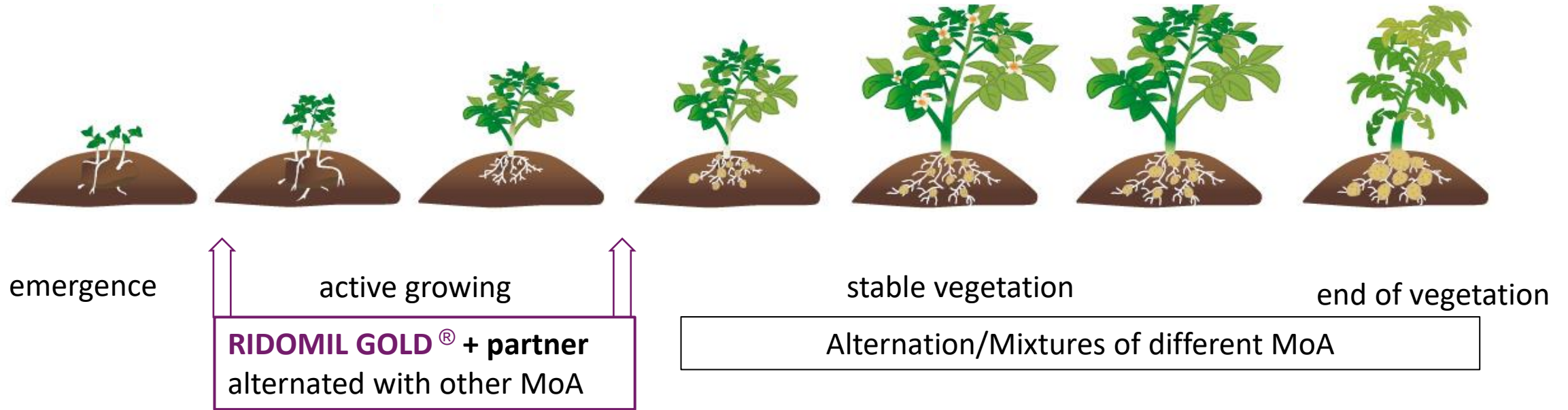


**Ridomil Gold®**

syngenta.

# RIDOMIL GOLD® Flexible positioning on Potato


## The cornerstone in integrated late blight management programs



RIDOMIL GOLD® + a partner integrated into the spraying program

- Freedom to choose the most appropriate partner for the mix in relation to:
  - phenologic stage (preferably in the rapid growth stages, early in the season),
  - anti resistance strategy, alternating max 2 sprays with different MoA
  - combined with disease forecasting systems and integrated with cultural control measures





If you want  
efficiency,  
trust those  
with **decades**  
of **experience.**

Trust **RIDOMIL Gold**® with more than  
30 years of consistent performance  
in crop protection.



**Ridomil Gold**®

syngenta.