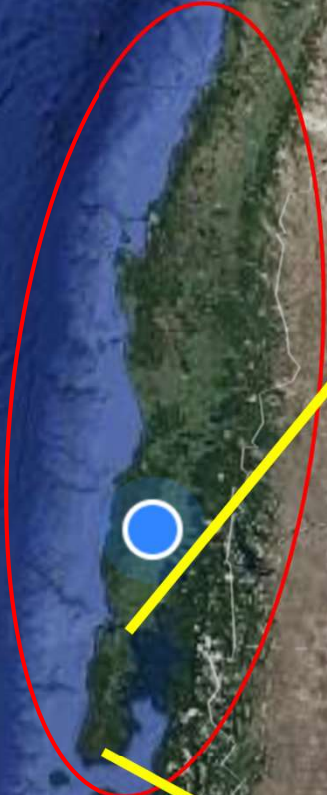


“Validation and implementation of DSS in small agriculture farming in Chiloe Island, Chile”



**Ivette Acuña B. Ing. Agr. Ph.D.
INIA Remehue, Chile**

Chile



Chiloé

Ancud

Castro

Isla Grande de Chiloé

Quellón

Chaitén

Parque Nacional Corcovado

El Bolsón

Lago Puelo

Trevelin

Futaleufu



Late blight *Phytophthora infestans*



- ✓ It is the most important disease in Chiloé.
- ✓ 50% yield losses
- ✓ Chiloé is a center of origin of *Solanum tuberosum sp tuberosum* (Chilotanum group)
- ✓ Most of these landraces are very susceptible to the disease.
- ✓ Very favorable conditions for the disease development.
- ✓ Small farming, mainly women.
- ✓ Organic production???





DSS (http://tizon.inia.cl)

Centrar mapa en

- Todas
- Bío Bío
- La Araucanía
- Los Ríos
- Los Lagos

Mapa de Alertas
16-12-2018

Ver Simbología

ALERTA Y PRONÓSTICO BOLETINES IVETTE ACUÑA

16 Dic: ROJA 17 Dic: ROJA
18 Dic: AMARILLA 19 Dic: AMARILLA

Polizones, Fresia

16 Dic: AMARILLA 17 Dic: NARANJA
18 Dic: NARANJA 19 Dic: NARANJA

EDITAR

Tara
Chonchi, Los Lagos

22 Mar actual
Alerta: VERDE
Aplicar Plaguicidas ***: sin calcular

23 Mar pronóstico
NARANJA

24 Mar pronóstico
NARANJA

25 Mar pronóstico

SIMULAR RIEGO

celeste cafe azul verde amarilla naranja roja

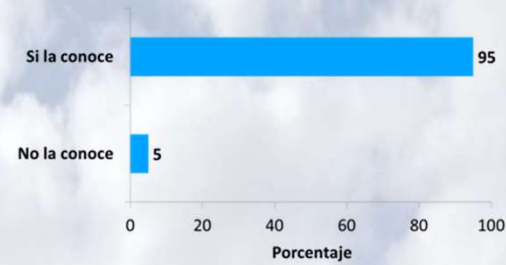
TEMPORADAS	Jul	Ago	Sep	Oct	Nov	Dic	Ene	Feb	Mar	Abr	May	
2020-2021	celeste	celeste	celeste	celeste	cafe	verde	verde	verde	verde	rojo	rojo	rojo
2019-2020	celeste	celeste	celeste	celeste	cafe	verde	verde	verde	verde	rojo	rojo	rojo
2018-2019	celeste	celeste	celeste	celeste	cafe	verde	verde	verde	verde	rojo	rojo	rojo
2017-2018	celeste	celeste	celeste	celeste	cafe	verde	verde	verde	verde	rojo	rojo	rojo
2016-2017	celeste	celeste	celeste	celeste	cafe	verde	verde	verde	verde	rojo	rojo	rojo
2015-2016	celeste	celeste	celeste	celeste	cafe	verde	verde	verde	verde	rojo	rojo	rojo
2014-2015	celeste	celeste	celeste	celeste	cafe	verde	verde	verde	verde	rojo	rojo	rojo
2013-2014	celeste	celeste	celeste	celeste	cafe	verde	verde	verde	verde	rojo	rojo	rojo
2012-2013	celeste	celeste	celeste	celeste	cafe	verde	verde	verde	verde	rojo	rojo	rojo
2011-2012	celeste	celeste	celeste	celeste	cafe	verde	verde	verde	verde	rojo	rojo	rojo

- **Weather network data: 54 stations**
- **5000 farmers registered**
- **80% of the potato area in Chile**
- **Information delivery: SMS, webpage, e-mail**

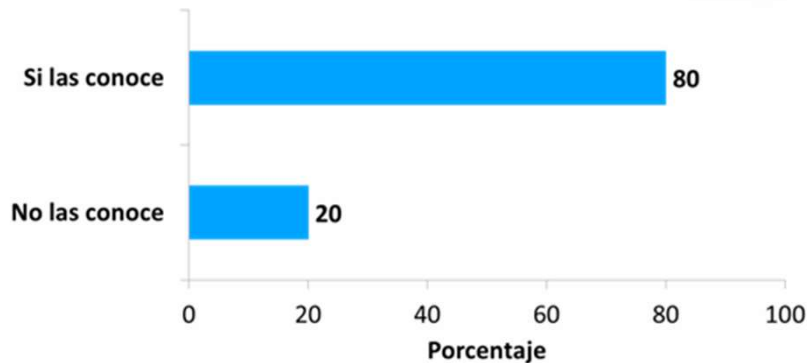


Base line

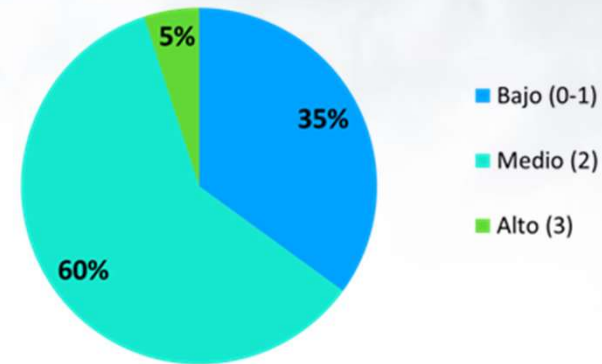
Do you know late blight, it is importante?



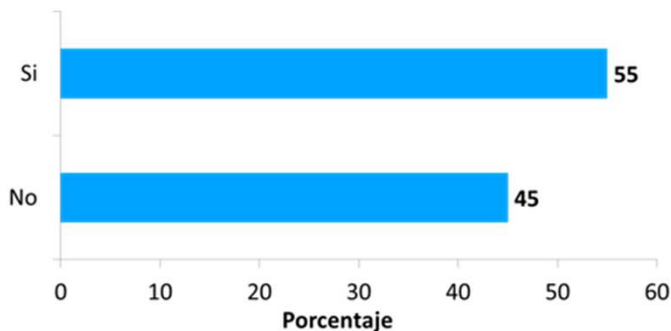
Do you know what the favorable conditions are for late blight?



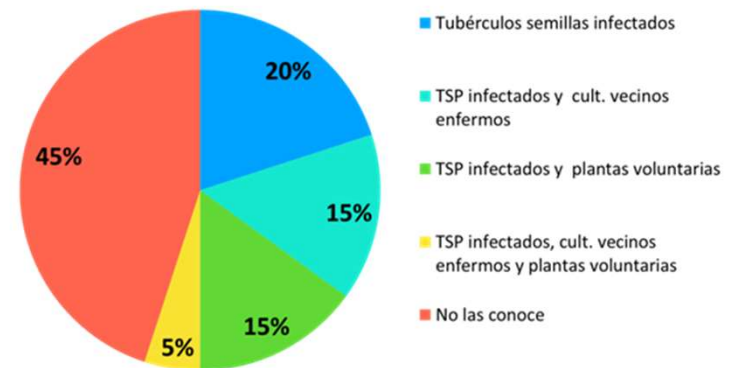
Knowlege about favorable condition for late blight



Do you know what the source of the disease are?



Knowlege about disease source for late blight



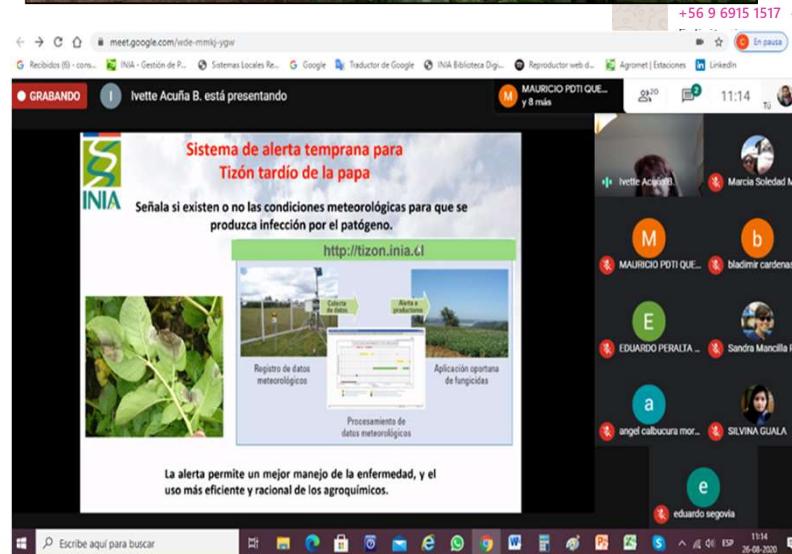


Methodology

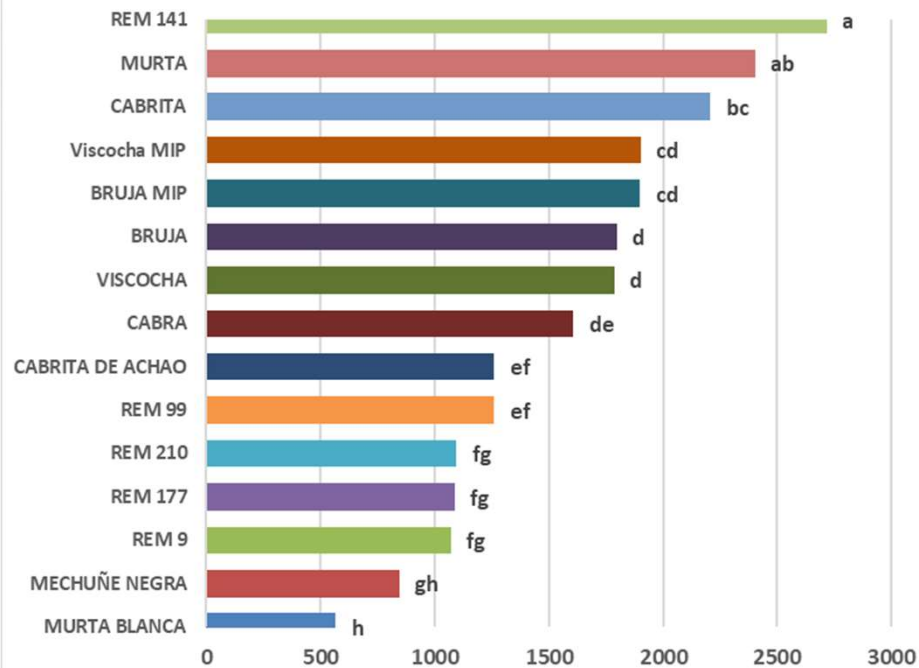
- Field plot for variety susceptibility
- Chemical control
- Cultural control
- Best agricultural practices
- Chemical control and DSS
- COVID 19 strategy:
 - WhatsApp,
 - Mobil phone
 - Google Meet
 - Videos
 - Podcast
 - Others



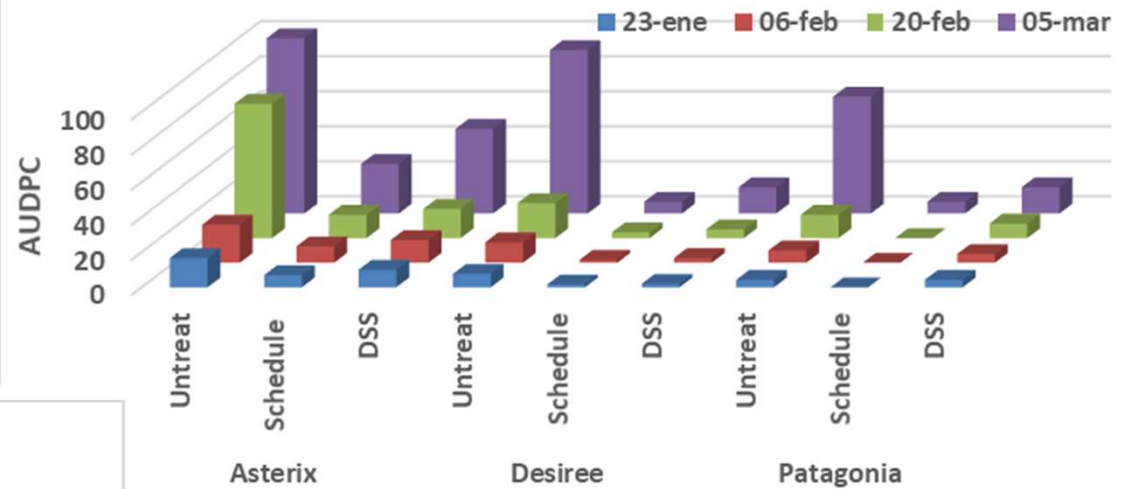
FONTAGRO
a, +56 9 4665 3524, +56 9 5351 0790, +56 9 5643 2081, +56 9 5649 8451, +56 9 5776 4276, +...



Variety susceptibility (AUDPC)



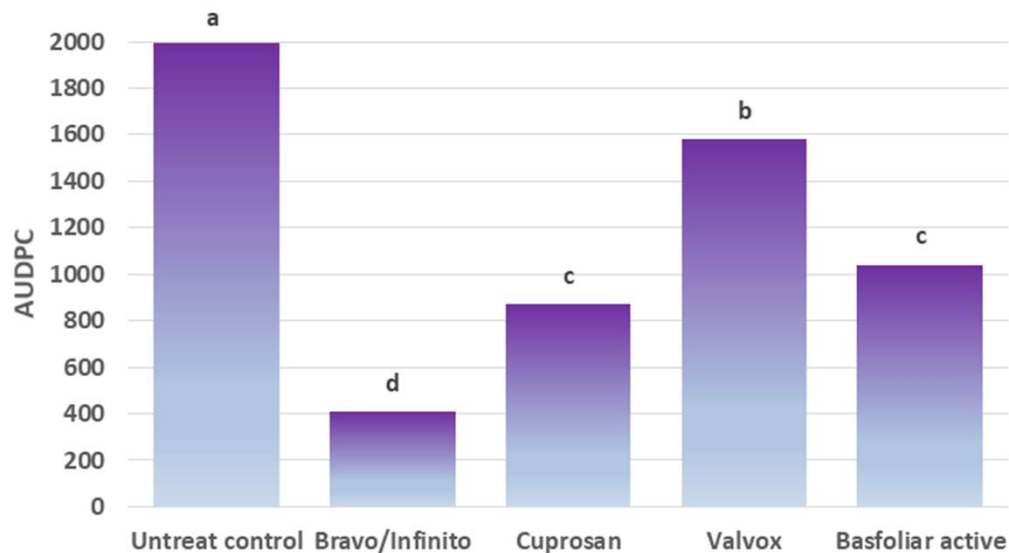
DSS validation INIA Bultacura, Chiloé, Chile



LSD 229,8, p=0.05

Schedule: 9 sprays
DSS: 6 sprays

Chemical Control



Problems and challenges

- Climate variability
- Low economic resources
- Low training and schooling
- Palliative reaction from farmers and authorities to the problem
- Lack of risk assessment
- Low knowledge and skills of new communication systems
- Similar situation in several Latin American countries



A close-up photograph of two purple flowers with yellow centers, likely from a Solanaceae plant. The flowers are in focus, with green leaves and stems visible in the background. The text "¡¡¡ Thank you!!!" is overlaid on the image.

¡¡¡ Thank you!!!

iacuna@inia.cl